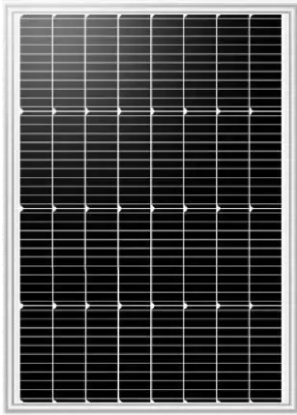
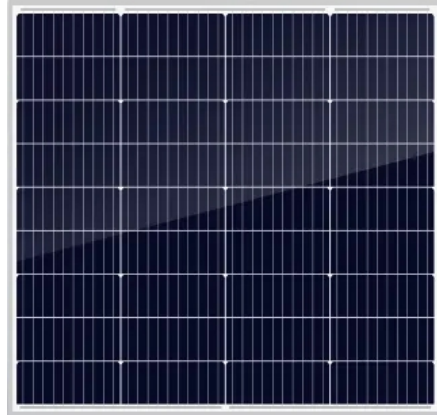


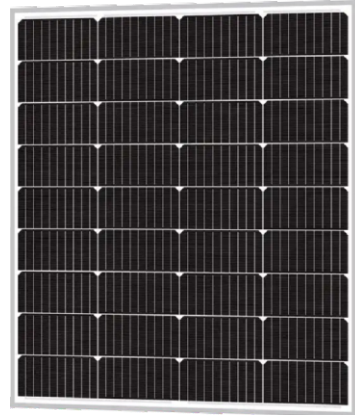
Monocrystalline



SF-M60



SF-M90

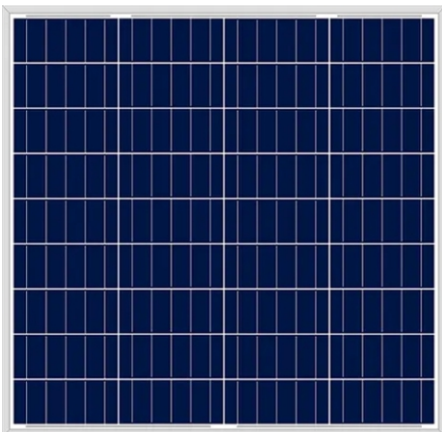


SF-M130

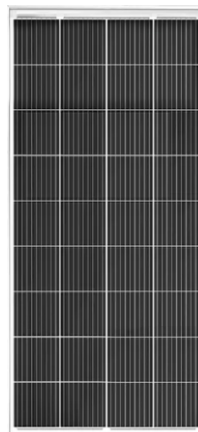


SF-M300

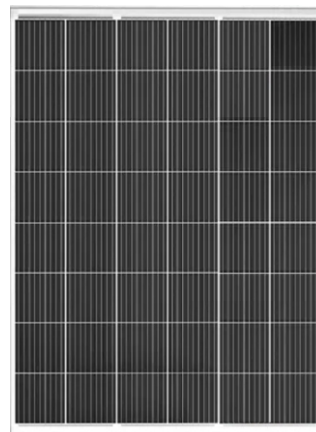
Polycrystalline



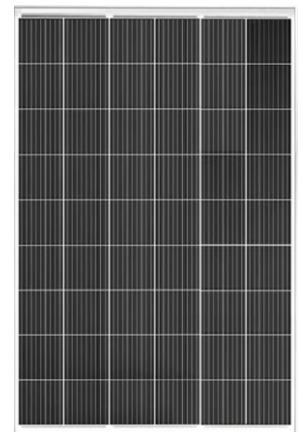
SF-P50



SF-P170



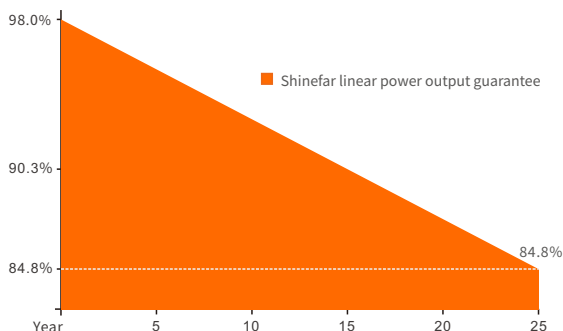
SF-P200



SF-P250

Superior Warranty

- 15-year material & technology warranty
- 25-year linear power output warranty



Comprehensive Products and System Certificates

- IEC/EN61215-1:2021 & IEC/EN61215-2:2021
- IEC/EN61730-1:2016 & IEC/EN61730-2:2016
- UL61730-1:2017 & UL61730-2:2017
- UL61215-1:2017 & UL61215-2:2017
- IEC 61701:2020-Saltmist
- IEC 62716:2013-Ammonia
- IEC 62804:2020-PID
- IECCE Certificate Body (CB)
- UKCA:EN61730-2018
- ISO9001 & ISO14001 & ISO45001



Specification List for Mono-crystalline silicon PV module

Module Type	Max Power Voltage[W]	Max Power Voltage[V]	Max Power Current[A]	Open Circuit Voltage[V]	Short Circuit Current[A]	Number of cells[pcs]	Size of cells[mm]	Module size [mm]	Weight [kg]	Cell efficiency	Module efficiency
SF-M40	40.00	17.80	2.25	22.30	2.39	2x18	182x30.33	410x620x25	3.20	19.60%	14.56%
SF-M50	50.00	18.80	2.66	23.55	2.88	4x9	182x36.4	770x400x25	4.30	21.20%	16.30%
SF-M55	50.00	17.80	2.81	22.40	3.02	4x9	166x41.5	430x710x25	4.20	22.17%	18.09%
SF-M60	60.00	18.20	3.31	22.45	3.61	4x8	182x45.5	420x770x25	5.20	22.65%	19.48%
SF-M90	90.00	18.50	4.86	22.35	5.35	4x9	182x60.66	600x770x30	5.80	22.64%	19.48%
SF-M100	100.00	19.50	5.12	22.50	5.58	4x10	182x60.66	670x770x30	6.20	22.64%	19.48%
SF-M110	110.00	18.20	6.05	22.30	6.51	4x18	166x83	830x710x30	7.50	22.20%	18.66%
SF-M130	130.00	18.30	7.31	22.32	7.89	4x9	182x91	875x770x30	10.50	22.64%	19.48%
SF-M170	170.00	18.23	8.78	22.48	9.49	4x9	156.75x156.75	1480x670x35	10.50	18.60%	16.06%
SF-M180	180.00	18.27	9.31	22.52	10.07	4x9	156.75x156.75	1480x670x35	10.50	19.76%	17.07%
SF-M180	180.00	18.30	9.83	22.05	10.65	4x18	182x60.66	1185x770x30	11.00	22.64%	19.48%
SF-M200	200.00	18.30	10.92	23.05	11.81	4x17	166x83	1485x710x30	11.00	21.35%	18.96%
SF-M200	200.00	18.50	10.81	22.35	11.67	4x9	158.75x158.75	1500x680x35	10.50	18.68%	15.67%
SF-M210	210.00	18.50	11.35	22.39	12.26	4x18	166x83	1580x710x35	10.80	22.17%	20.34%
SF-M220	220.00	18.50	12.16	22.39	13.14	4x18	166x83	1580x710x35	10.80	22.17%	20.34%
SF-M240	240.00	35.50	7.04	42.85	7.67	4x16	182x91	1530x770x35	14.50	22.75%	20.37%
SF-M300	300.00	31.33	9.57	37.58	10.38	6x10	156.75x156.75	1640x992x35	18.00	22.80%	18.75%
SF-M300	300.00	41.20	7.28	50.50	7.87	4x20	182x91	1902x770x35	16.50	22.65%	20.49%
SF-M300	300.00	36.00	8.33	43.20	8.99	4x16	210x105	1760x890x35	17.80	21.35%	19.15%

Specification List for Poly-crystalline silicon PV module

Module Type	Max Power Voltage[W]	Max Power Voltage[V]	Max Power Current[A]	Open Circuit Voltage[V]	Short Circuit Current[A]	Number of cells[pcs]	Size of cells[mm]	Module size [mm]	Weight [kg]	Cell efficiency	Module efficiency
SF-P30	30.00	17.20	1.75	21.80	1.85	4x9	156x31.2	340x670x20	3.70	14.48%	10.92%
SF-P40	40.00	19.46	2.06	24.20	2.20	4x9	156x39	670x420x25	4.00	17.46%	13.26%
SF-P50	50.00	17.50	2.86	21.60	3.12	4x9	156x52	540x670x25	4.30	17.63%	13.81%
SF-P80	80.00	17.17	4.66	21.55	4.95	4x9	156x78	780x670x30	6.80	17.06%	14.21%
SF-P100	100.00	17.20	5.82	21.80	6.18	4x9	156x104	1020x670x30	7.20	17.81%	14.92%
SF-P120	120.00	17.80	6.74	21.95	7.35	4x9	156x117	1120x670x30	9.00	18.80%	15.99%
SF-P150	150.00	17.80	8.43	22.32	8.96	4x9	157x157	1480x670x35	10.50	17.46%	15.06%
SF-P160	160.00	18.21	8.79	22.39	9.53	4x9	157x157	1480x670x35	10.50	18.63%	16.06%
SF-P170	170.00	18.00	4.67	44.25	5.06	4x9	157x157	1480x670x35	10.50	16.90%	14.84%
SF-P200	200.00	24.32	8.22	29.33	8.80	6x8	157x157	1320x992x35	15.00	17.40%	15.27%
SF-P210	210.00	24.48	8.59	29.48	8.58	6x8	157x157	1320x992x35	15.00	16.30%	14.28%
SF-P250	250.00	28.20	8.86	35.60	9.58	6x9	157x157	1482x992x35	17.00	18.80%	17.05%